

MERIT AWARD WINNERS



■ STUDIES, RESEARCH AND CONSULTING

T. Y. LIN INTERNATIONAL Evanston Multi-Modal Transportation Plan

Owner: City of Evanston
 Consultants: Fish Transportation Group, Inc. /
 Suzan A. Pinsof and Associates / Rich and Associates, Inc.

T.Y. Lin International, along with Fish Transportation Group, Inc., Suzan A. Pinsof and Associates, and Rich & Associates, Inc. prepared the first Multi-Modal Transportation Plan for the City of Evanston, Illinois. The Transportation Plan addresses all transportation modes (bicycle, freight, pedestrian, transit, and vehicle).

Infrastructure, program, and policy recommendations were developed in support of Evanston's goals and objectives. Design guidelines were developed for each of the transportation modes and their interactions: alleys and maintenance/municipal service needs, bicycle, parking, pedestrian, roadways, and transit, including rail and bus. Extensive public and stakeholder involvement processes were undertaken in the development of the Plan.



CH2M HILL, Inc. Support for the Illinois Strategic Highway Safety Plan

Owner: Illinois Department of Transportation

CH2M HILL, Inc. assisted the Bureau of Safety Engineering with updating/ implementing the Illinois Strategic Highway Safety Plan through various safety services resulting in a significant reduction of fatalities on roadways in Illinois. Sample tasks included:

- Analysis of data to support program and recommend safety-based improvements
- Review of IDOT/other policies to support or enhance program
- Development/delivery of training, manuals, and guidance for internal/external persons dealing with highway/traffic safety
- Development/maintenance of safety-related databases and safety-based decision support tools
- Organizing/conducting meetings and workshops on highway/traffic safety
- Technical support to local agencies

MERIT AWARD WINNERS



ESI CONSULTANTS, LTD. Village of Long Grove Downtown Master Plan

Owner: Village of Long Grove
Consultants: Hitchcock Design Group / Business Districts, Inc.

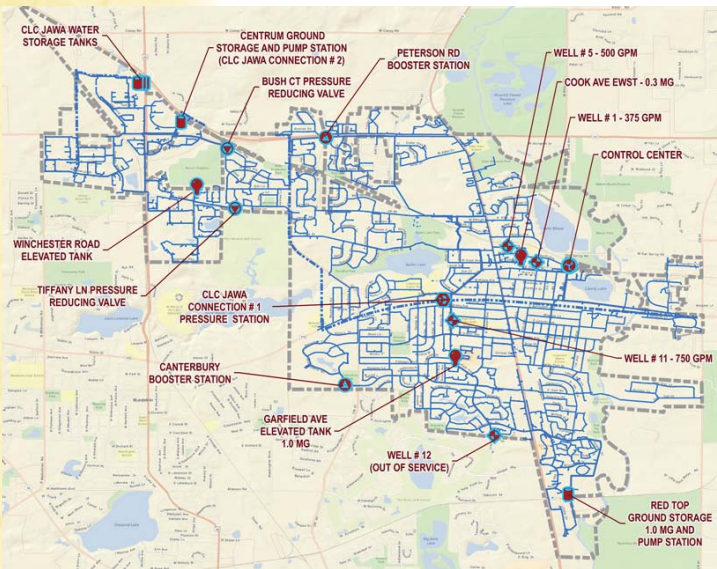
The Long Grove Master Plan is a long term project with multiple components designed to enhance the historical nature of buildings, landscape and infrastructure with thoughtful amenities that blend seamlessly with the existing 19th century charm. This Master Plan included a thorough and collaborative planning process, presented several alternative concepts, refined the desirable options, and then

implemented the plans based on ESI's final recommendations. The project was guided by a diverse group of stakeholders including the Downtown Task Force, Village staff, elected officials at local, county and state levels, property owners, and residents. The analysis revealed remarkable potential for Village growth in historical, social and business development.

ENGINEERING ENTERPRISES, INC. Emergency Water Supply Needs Assessment

Owner: Village of Libertyville

The Village of Libertyville and Engineering Enterprises, Inc. (EEI) employed an innovative and proactive approach to understanding the Village's water supply, storage, and distribution system needs during emergency situations. Working with Village staff, EEI developed a multi-variable risk assessment matrix to evaluate the impact to the water system in a variety of potential water supply service interruption scenarios. Based upon the analysis, a prioritized program of improvements to increase the reliability of the water works system to meet the emergency water supply demands was established for implementation by the Village.



MERIT AWARD WINNERS



■ BUILDING/TECHNOLOGY SYSTEMS

SHIVE-HATTERY, INC. **Rock Island Arsenal Building 220 Window Replacement**

Owner: Rock Island Arsenal
Consultants: Russell Construction Company

Building 220 houses a manufacturing process that uses state-of-the-art, multi-million dollar equipment. The original window system in the three-story, 90-year-old building, was seriously deteriorated. Shive-Hattery provided high definition (3D) scanning to get fast yet accurate window measurements. The next challenge was design and installation of the windows without disrupting the manufacturing process and also providing a safe workplace. The new glazing system is true divided lite, thermally broke, aluminum curtain wall system with individual outward projecting operating sashes. This system meets the owner's goal of increased thermal ratings and projected windows that are more responsive and efficient.



■ STRUCTURAL SYSTEMS

ALFRED BENESCH & COMPANY **IC & E Emergency Bridge Replacement**

Owner: Cedar American Rail Holdings, Inc.

After a train derailment demolished a 166 foot-long steel girder span on this bridge over the Turkey River, Benesch was called to design both a temporary and then permanent replacement structure. Steel beams supported on driven steel H-pile bents were used to expedite the temporary bridge design, which was designed and constructed within two weeks. The substructure for the permanent bridge was constructed in-line and beneath the temporary spans with minimal disruption to rail traffic. The entire project, including the temporary and permanent structure was completed within 14 months of the train derailment.

MERIT AWARD WINNERS



ENVIRONMENTAL

KASKASKIA ENGINEERING GROUP, LLC **Restoration of Lake Paradise**

Owner: City of Mattoon
Consultants: Crawford, Murphy & Tilly, Inc. / Illinois State Water Survey

Lake Paradise is one of two water supply reservoirs owned by the City of Mattoon. Originally constructed in 1908, the lake has been expanded twice and suffers from a number of problems related to its age and the agricultural land use in the watershed. Lake restoration included excavation of a sediment retention basin within the reservoir, regrading and revegetating exposed shorelines with native plants, and developing wetlands in the sediment retention basin. Additionally, experimental floating wetlands were constructed for fish habitat and nutrient uptake. This project was partially funded by the IEPA's Clean Lakes and 319 grant programs.

WATER AND WASTEWATER

BAXTER & WOODMAN, INC. **Marseilles North WWTP Improvements**

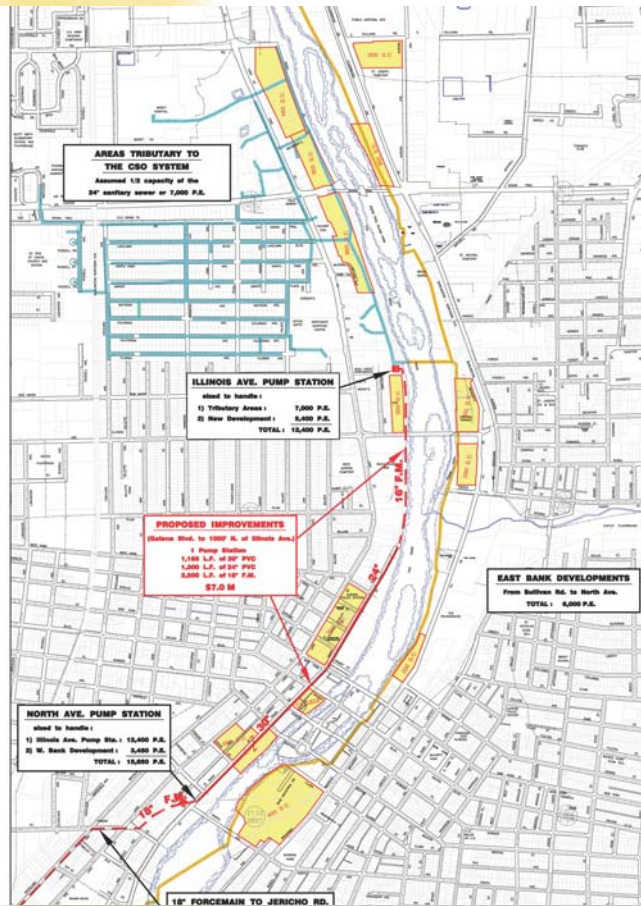
Owner: City of Marseilles

Marseilles could not waste sludge from its digesters during the winter. It filled its sludge drying beds, but could not clean beds until spring when the sludge dried. Mechanical sludge dewatering was needed. During the design phase, Baxter & Woodman and the City evaluated two alternatives, a traditional belt press and a new technology, the rotary press. The rotary press was more cost-effective. After

visiting three installations and the rotary press factory in Canada, the City chose to install a rotary press. This is the first installation of a rotary press in Illinois and the second in the Midwest.



MERIT AWARD WINNERS



WALTER E. DEUCHLER ASSOCIATES, INC.
City of Aurora Downtown Redevelopment Project

Owner: City of Aurora / Fox Metro Water Reclamation District
 Consultants: IDCS, LLC / D. S. Wells Architects / Testing Services Corporation, Inc. / Electrical Engineering Consultants, P.C.

Walter E. Deuchler Associates, Inc. (WEDA) managed the planning, design and construction of the Aurora Downtown Redevelopment Project for both the Fox Metro Water Reclamation District and the City of Aurora. As part of Aurora's efforts to revitalize its downtown along the Fox River, a multi-phase \$13.5 million wastewater infrastructure improvements project was completed in December 2008 resulting in an increase of wastewater conveyance capacity to serve an additional 22,500 people.

The project included 2 pump stations (3,250 gpm and 3,750 gpm), sanitary forcemain (9,300' between 18"-20" in diameter) and sanitary sewer (15,250' up to 36" in diameter). The City invested an additional \$6 million in water main replacement (5,200'), new storm sewer (9,400' up to 60" in diameter) and roadway improvements, also managed by WEDA.



CRAWFORD, MURPHY & TILLY, INC.
Litchfield Water Treatment Plant & Dam Improvements

Owner: City of Litchfield, IL
 Consultants: Shannon Wilson

The City of Litchfield replaced their 80-year-old water treatment plant with an innovative four million gallon per day (MGD) plant that utilizes both granular media and membrane filtration and can operate using either or both methods. It is one of only a few plants in Illinois that uses membrane filtration on a surface water supply. The citizens of Litchfield threw their support behind this

technology - which provides higher quality drinking water by completely removing pathogens - and were instrumental in its eventual inclusion to the project. Other project highlights include meeting the client's goals of increased automation and improved worker safety.

MERIT AWARD WINNERS



STRAND ASSOCIATES, INC. **Romeoville's Safer Water and System Upgrades**

Owner: Village of Romeoville

When the IEPA announced that, effective March 1, 2006, a new regulation would be enforced limiting the average Combined Radium concentration in drinking water, the Village of Romeoville's staff knew they would be affected.

Although many communities faced this challenge, the Village of Romeoville embraced the challenge and exceeded the regulatory requirements by renewing their entire water supply and storage system and dividing the project into manageable tasks spaced over 5 years. This management approach allowed the Village to efficiently monitor progress and control gradual spending of allocated Village funds while meeting the compliance schedule set by IEPA.



HENEGHAN AND ASSOCIATES, P. C. **Gateway Regional Water Company**

Owner: Gateway Regional Water Company
Consultants: Rhutasel and Associates, Inc. /
Holcom Foundation Engineering / Rothermel Engineering

In 1993, volunteers initiated the concept of a regional water system serving at least 4 communities and 5 rural water systems in Illinois. The system was needed due to the lack of water sources and water suppliers. Thanks to volunteers, legislators, communities, rural water systems, state and federal agencies, Phase I was completed in 2008. The 45-50 miles of water lines serve approximately 20,000 residents. The communities and water companies served comprise Gateway's Board of Directors. Heneghan and Associates, P.C. served as a catalyst and remains active for maintenance and expansions. Grants and loans totaling \$19,360,000 helped fund the project.

MERIT AWARD WINNERS



HENRY, MEISENHEIMER & GENDE, INC. **Wastewater Treatment Facilities**

Owner: City of Waterloo
Consultants: BHMG / Holcomb Foundation Engineering Co.

Continued growth and maintaining three wastewater treatment plants caused the City of Waterloo to investigate a single wastewater treatment plant with reserve capacity to handle 20-year growth. The cost effective solution was to construct a new plant adjacent to the existing East Plant.

The new 2.086 MGD plant includes a mechanical bar screen, grit chamber, four sequencing batch reactors, non-potable water system, two aerobic digesters, belt filter press, and liquid and dried sludge storage. A new pump station at the West Plant was also constructed to direct flow to the new plant.



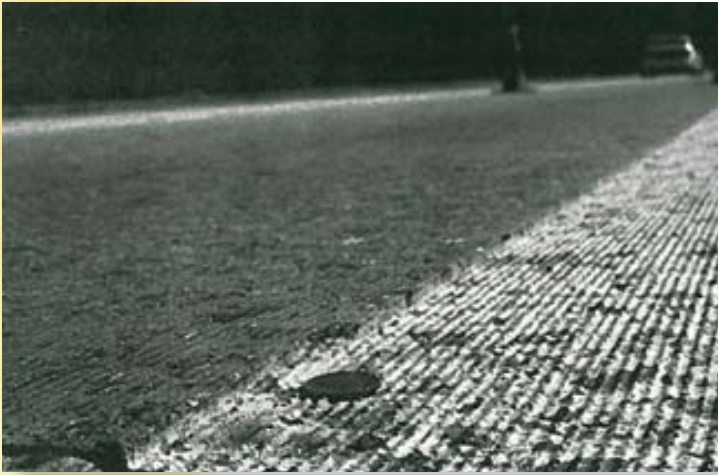
■ TRANSPORTATION

URS CORPORATION **Winter Avenue Reconstruction - Phase II**

Owner: City of Danville
Consultants: Midwest Engineering Services, Inc.

Winter Avenue is a Minor Urban Arterial located on the north side of the City of Danville and provides access to several parks including softball fields and the Danville Area Soccer Complex. The project involved the reconstruction of over one mile of urban roadway and included the replacement of a hazardous one lane underpass under CSX railroad and the replacement of a one lane bridge over Stoney Creek. The reconstructed roadway now consists of a curb and gutter section and accommodates pedestrians and bicyclists with a shared-use path. Work also included improvements to the Winter/Bowman Avenue intersection.

MERIT AWARD WINNERS



CIVILTECH ENGINEERING, INC. **LCDOT Dowel Bar Retrofit and Pavement Rehabilitation**

Owner: Lake County Division of Transportation

The Lake County Division of Transportation's Dowel Bar Retrofit and Pavement Rehabilitation project involves resurfacing, patching, and adding a southbound through lane along Buffalo Grove Road between IL Route 83 and Deerfield Parkway (approximately 3,000 ft or 0.57 mi).

A diamond grinding pavement restoration technique shall be used to restore the surface of the existing concrete pavement. Diamond grinding will be used in conjunction with other Concrete Pavement Rehabilitation (CPR) techniques, such as full-depth repair, dowel bar retrofit (load transfer restoration), and spot curb and gutter repairs to restore structural integrity to the existing concrete pavement.



CIVILTECH ENGINEERING, INC. **Kirk Road & IL 56 Intersection Improvement**

Owner: Kane County Division of Transportation

Kirk/Farnsworth is a major N-S corridor between IL Route 64 and I-88. This project was the complete intersection reconstruction of Kirk and IL 56 Butterfield. The goals were to build a safer intersection with dramatically increased capacity.

The geometric improvements consisted of Kirk/Farnsworth being rebuilt from two lanes to three lanes with dual left turn lanes and exclusive right turn lanes. IL 56 went from single lanes to two lanes with dual left turn lanes and exclusive right turn lanes. Upon completion the intersection of Kirk and IL 56 became the largest intersection in the County.

MERIT AWARD WINNERS



OATES ASSOCIATES, INC. **Governors' Parkway**

Owner: Madison County Highway Department
Consultants: SCI Engineering, Inc. / Crawford Murphy & Tilly, Inc.

In response to continued residential and commercial growth in the Edwardsville area, the Madison County Highway Department decided to design and construct a new east-west route from I-55 to the entrance to Southern Illinois University Edwardsville along a route acquired by IDOT over 20 years ago.

The third phase of Governors' Parkway is a 3-mile section consisting of 3-lane pavement with a center two-way left turn lane, a bridge, several large culverts and 3 signalized intersections. This new segment now connects a growing residential section of town to I-55 on the east and the City's major retail section to the west.



ENGINEERING ENTERPRISES, INC. **Municipal Drive & Galena Boulevard Extensions**

Owner: Village of Sugar Grove
Consultants: Huff & Huff, Inc. / Sunjoy Area Lighting, Inc. / Terracon Consultants, Inc.

The Village of Sugar Grove proactively addressed transportation infrastructure improvements needed to spur economic development, improve the north/south traffic corridor and reduce existing and future traffic congestion along IL Route 47. Engineering Enterprises, Inc. provided

planning, design and construction engineering services for a new road on a new alignment extending Municipal Drive from US Route 30 to IL Route 47 and extending Galena Boulevard from IL Route 47 westerly to the intersection with Municipal Drive as established in the Sugar Grove Comprehensive Long Range Transportation Plan.

MERIT AWARD WINNERS



RHUTASEL AND ASSOCIATES, INC. **Obernuefemann Road Improvements**

Owner: City of O'Fallon, Illinois

Obernuefemann Road Improvements consisted of the complete reconstruction of an existing oil and chip roadway to a new facility. The new roadway includes curb and gutter, asphalt pavement, storm sewer, sidewalks and thermoplastic pavement markings. Close coordination throughout design of the project was necessary due to the concurrent design/construction of a 200-acre park adjacent to the project site.

The project was funded with a \$740,275 grant from the Federal Highway Administration through its Surface Transportation Program as administered through the Illinois Department of Transportation. Project Owner/Client is the City of O'Fallon, Illinois and project designer was Rhutasel and Associates, Inc.



■ SPECIAL PROJECTS

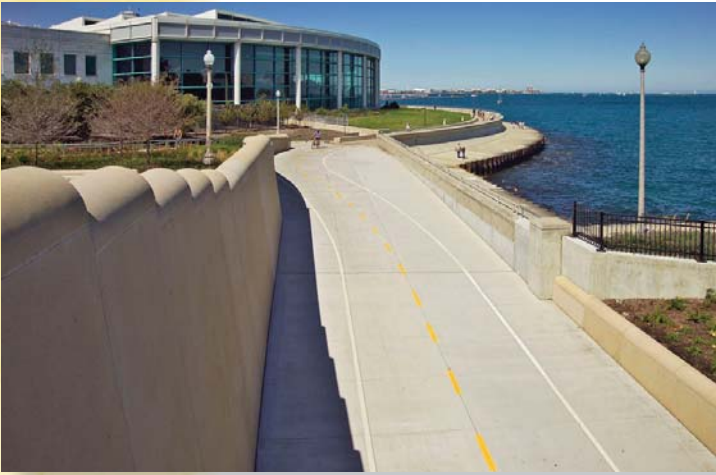
STANLEY CONSULTANTS, INC. **Hyde Park Streetscape and Viaduct Improvements**

Owner: City of Chicago, Department of Transportation, Division of Project Development
Consultants: DLK Civic Design / DuSable, Inc.

A major facelift of the viaducts and railroad embankments along Hyde Park's 53rd and 55th Streets has revitalized the area and connected two divided communities.

Previously the only connection was through dark viaduct underpasses. These waiting areas for the local transit are now enhanced with new aesthetics and lighting creating a secure and welcoming passage. Appealing architecture and murals adorn the area. The makeover included a new steel arch system walkway enhancement with new pedestrian and roadway lighting; ADA compliant ramps and sidewalks; and structural and architectural enhancements to the viaduct façade and columns. The goal of making Hyde Park a walkable, connected community has been achieved.

MERIT AWARD WINNERS



HOMER L. CHASTAIN & ASSOCIATES, LLP Solidarity Drive Underpass & Museum Campus Drive

Owner: City of Chicago
Consultants: H. W. Lochner, Inc. / Muller & Muller, Ltd. /
Dynasty Group, Inc. / Daniel Weinbach & Partners, Ltd. /
Johnson Laskey Architects / APEX Consulting Engineers,
LLC / EJM Engineering, Inc. / DB Sterlin Consultants, Inc.

This project created a safe passage way for the City's Lakefront Trail users with the construction of the Solidarity Drive Underpass and eased congestion. Previously, the Trail crossed Solidarity Drive at street level, where vehicles, pedestrians and Trail users co-mingled.

The project improvements required the labyrinth of utilities to be temporarily relocated during construction and then set to their final alignments over the new underpass.

A historic monument was restored and relocated to make way for the underpass, and the Burnham Harbor parking lot was reconfigured to eliminate a Trail crossing. Traffic was maintained at all times to assure safety and access to all the amenities this area offers.



WENDLER ENGINEERING SERVICES, INC. Heritage Crossing Riverfront Plaza

Owner: City of Dixon, Illinois
Consultants: Schreiber Anderson Associates / John McLane
Architect / KJWW Engineering Consultants / Commercial
Aquatic Engineering

This project is comprised of a riverfront plaza in downtown Dixon, Illinois including construction of a bicycle / pedestrian path along the river's edge and a park space. Access ramps, stairs, and seating areas are provided throughout the plaza to facilitate pedestrian and bicycle traffic. This creates a scenic, vehicle free route for trail users through a busy downtown area that crosses under two major highways and connects to a citywide trail system.

Heritage Crossing's facilities and features serve as a popular destination for the people of Dixon and its visitors and provide valuable insight into local history.

MERIT AWARD WINNERS



■ SMALL PROJECTS

FEHR-GRAHAM & ASSOCIATES **The City of Rockford's Ekberg Water Main**

Owner: The City of Rockford, Illinois

The City of Rockford's Ekberg Water Main 2008 project consisted of 10-inch diameter main looping between two existing well facilities. Project challenges arose due to the fact that the water main route passed through a Superfund site.

Fehr-Graham & Associates developed contract documents identifying areas of contaminated soils and groundwater. The specifications included estimated quantities of and procedures for contaminated soil and groundwater handling and removal, health and safety plan for construction workers and the associated laboratory testing.

This project was complete two weeks ahead of schedule and 15% below the contractor's bid.



ESI CONSULTANTS, LTD. **Danville Stadium & Parking Lot** **Reconstruction**

Owner: City of Danville

Consultants: Fuhrmann Engineering, Inc.

The Danville Stadium project is a long term project with multiple components designed to enhance the historical nature of this historical wooden baseball stadium. The project highlights include parking lot improvements incorporating green storm water drainage design elements.

The stadium structure itself was inspected for structural deficiencies and a five year structural improvement plan was developed to repair the stadium's structural elements. The stadium was constructed in 1946 and was home to a farm team for the Brooklyn Dodgers. The stadium has also been the setting for selected scenes for the 1992 movie, "The Babe".